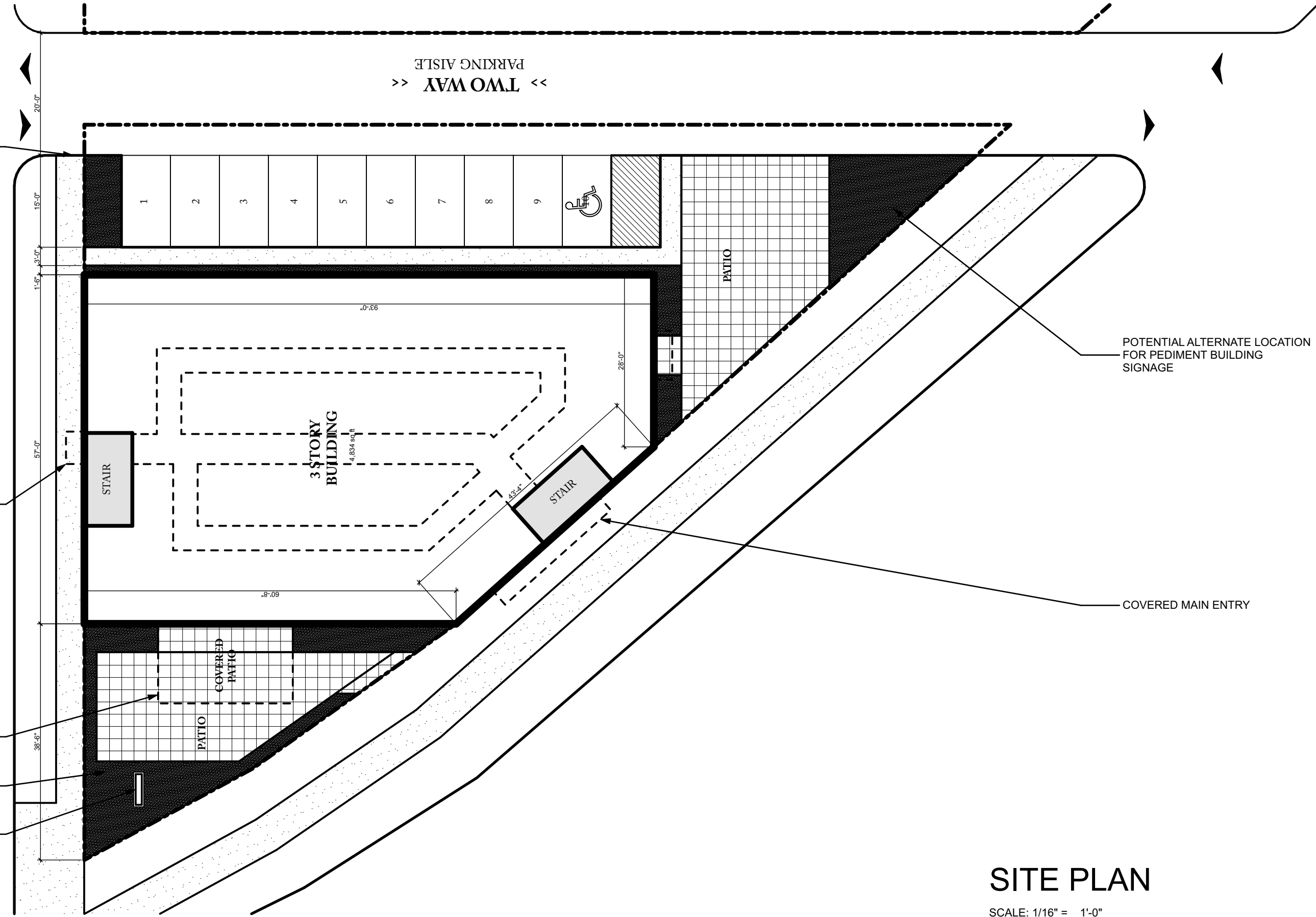


WIDENED ALLEY FOR TWO WAY ACCESS

>> TWO WAY <<  
PARKING AISLE



# SITE PLAN

SCALE: 1/16" = 1'-0"

SK-04B  
1/10/21  
PROJECT NO.: 19005

PROPOSED SITE PLAN  
WESTOVER HILLS BLVD  
RICHMOND, VIRGINIA

